



RIPE 56 - Technical Summary

James Aldridge
RIPE NCC



Overview

- What's new for RIPE 56
- The RIPE 56 network
- Problems encountered
- Some statistics
- The technical team
- Questions



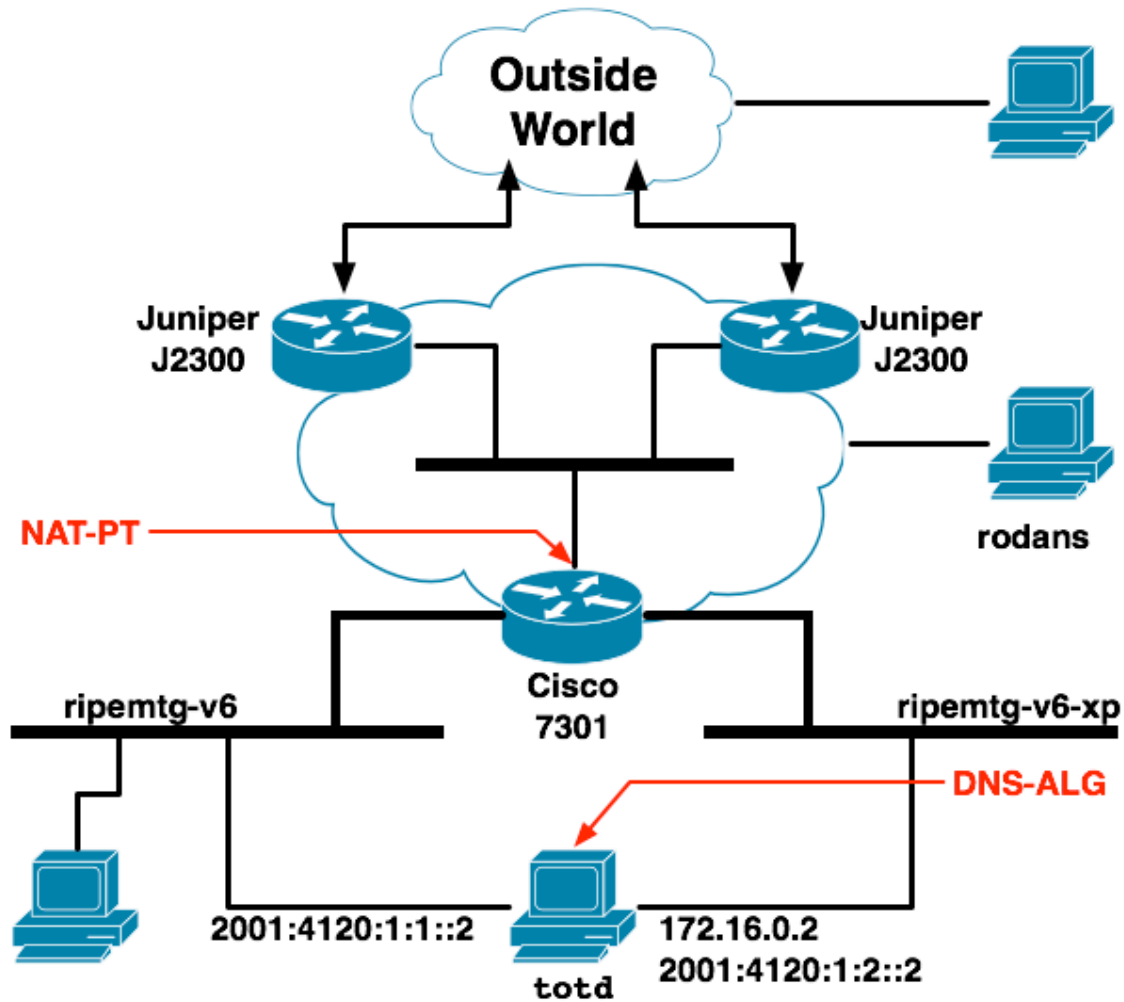
What's new for RIPE 56

- New webcast equipment
- Additional access points in wireless LAN
- Virtualised servers
- Different routers
- IPv6 NAT-PT/DNS-ALG and the IPv6 Hour
- Larger IPv4 address block
 - /21 instead of /22
- Much larger IPv6 address block
 - 2001:4120::/32 borrowed from Telecity DE





The RIPE 56 network





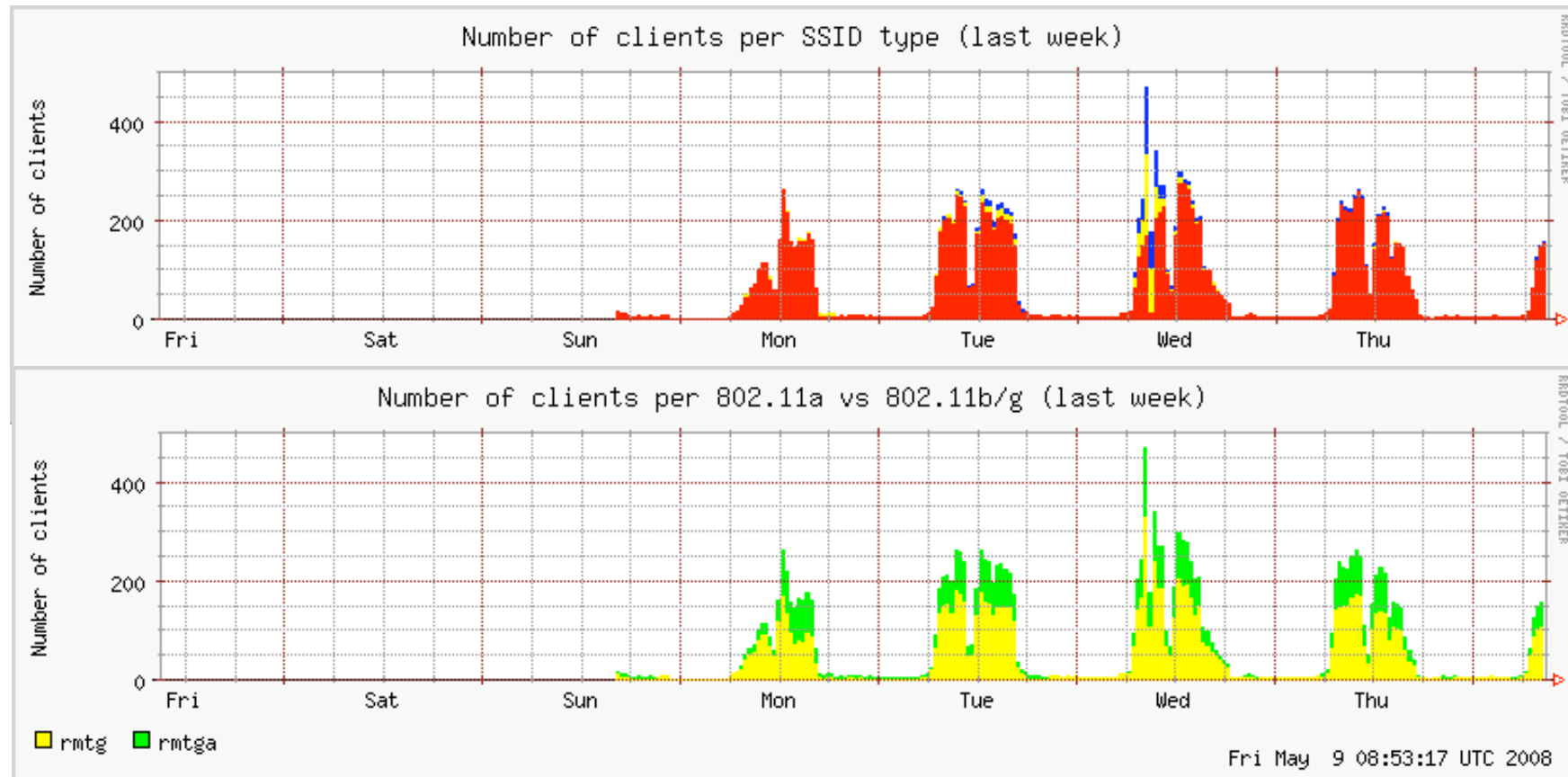
Problems encountered

- Memory shortages on the Juniper routers during the setup period
 - Following a visit to a local computer store, the routers are now happy with 1 Gbyte each
- NAT-PT configuration
 - Configurations which were supposed to work didn't
- Wireless LAN issues around the IPv6 Hour
 - Some of the more heavily loaded access points around the plenary room appeared to hang when the IPv4 networks were disabled
- Problems with audiocast from breakout room
 - A recent Windows update seems to have broken support for our dedicated audio capture card
 - Audio encoding has been done on my MacBook Pro running Windows XP under VMware Fusion



Some Statistics

- Clients on the wireless LAN

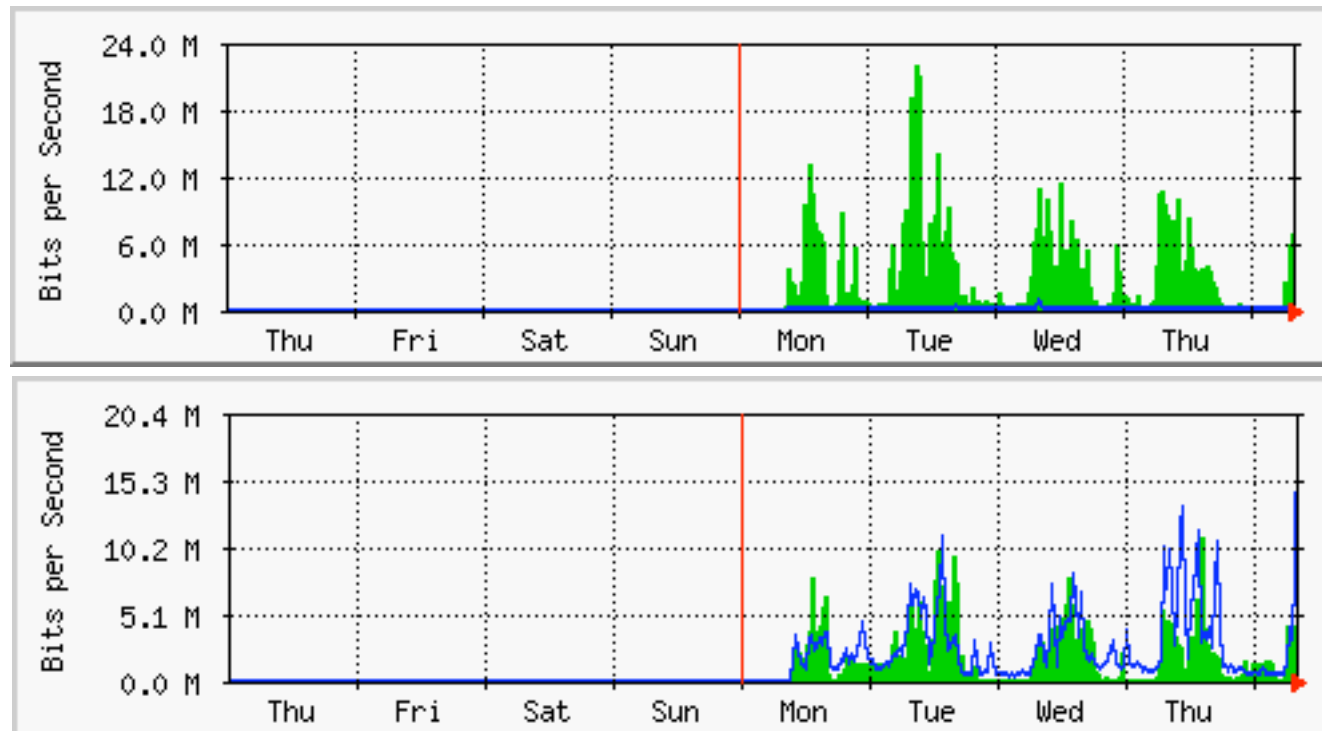


- Peak between 300 and 400 users



Some more statistics

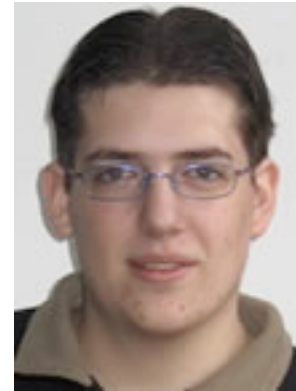
- Traffic to and from the RIPE Meeting network



- Peak approximately 30 Mbps



The technical team





Questions?

